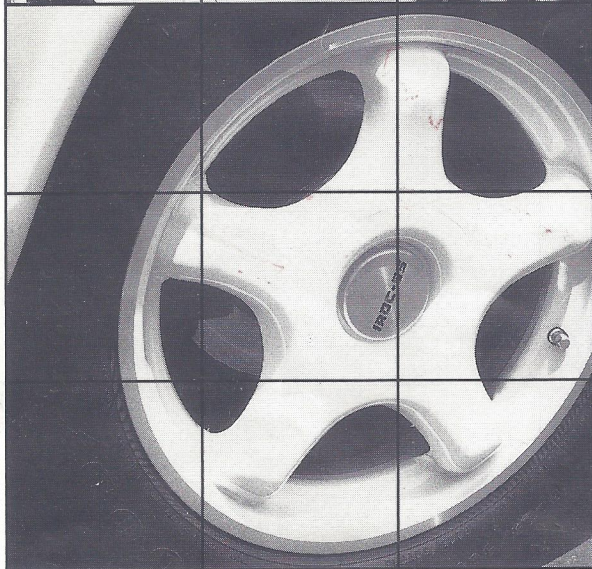
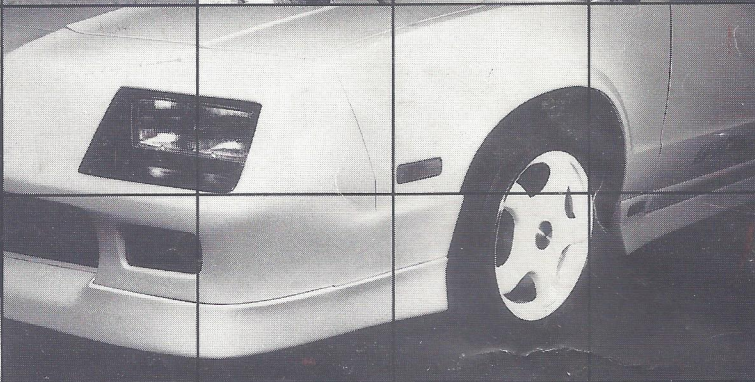
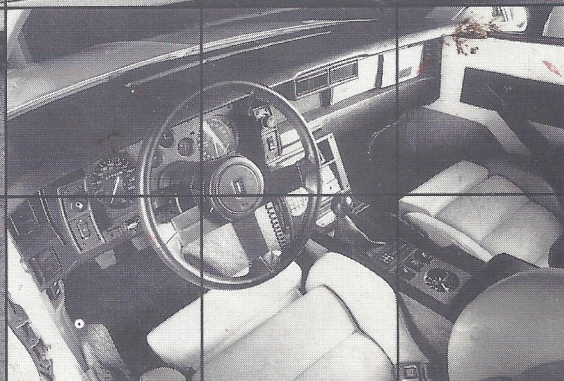
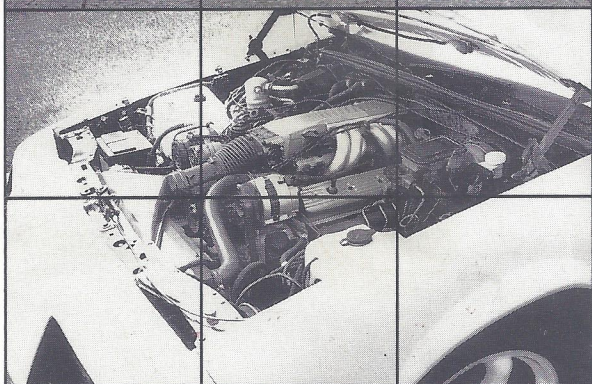
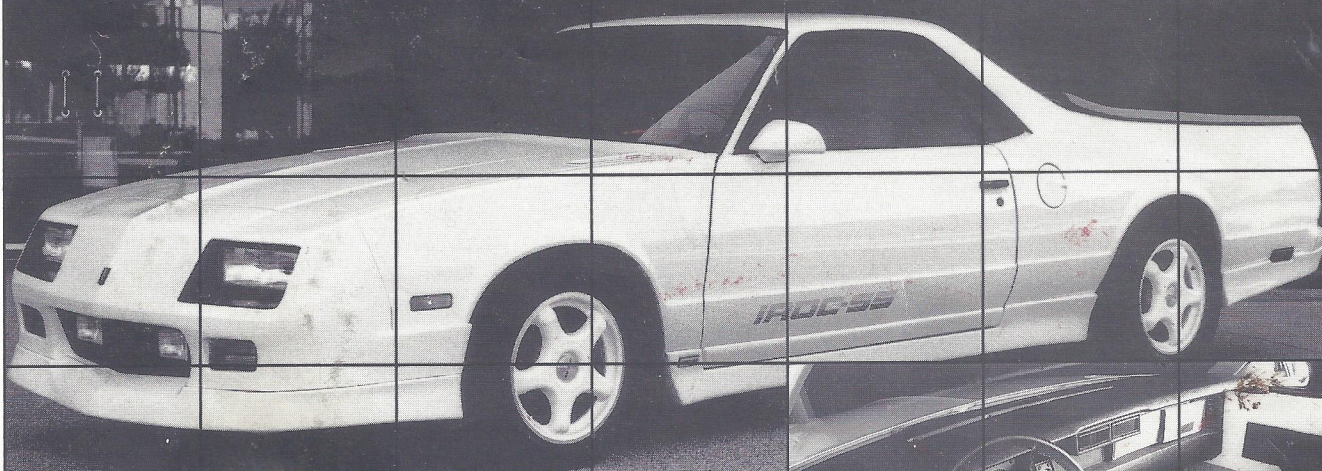


*Imagine There Is No Limit
It's Easy If You Try*



IROC-SS

Imagine...

Converting your 1978 to 1987 El Camino to look like this by simply replacing your old grille panel and bumper with our new direct bolt-on IROC Camaro styled ones.

Crystalite has taken the El Camino All The Way!



Our new IROC S/S bumpers are made of tough hi-tech sophisticated (hand laminated CORMAT LINED fiberglass) material.

CORMAT is a woven carbon fiber and graphic impregnated liner that was given birth by those geniuses that put man into space. CORMAT lined fiberglass expands and contracts only a fraction of normal fiberglass.

CORMAT lined glass doesn't shatter and has a very high degree of over 400 percent more strength, able to withstand a tremendous amount of pressure and impact!

We invested hundreds of hours designing, developing and adjusting the proto type parts for a precise fail-safe easy installation for you.

We know that you'll be amazed at these parts into your old body holes.

The installation can be done at home only a couple of hours.

There are no body modifications ne

We ask you to take a moment and ask: What is your El Camino worth today and how much is it worth?

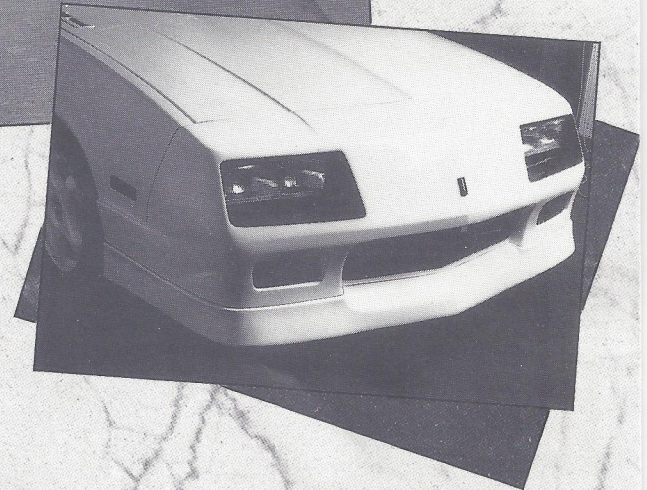
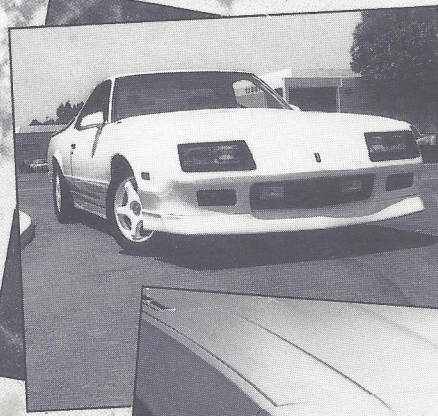
We bought an 1982 El Camino with a 350 tuned port engine, a new 5 speed 40A Suspension, new glass, paint, and a package.

The main goal was to complete the project for a cost under ten thousand dollars. We are in the automotive market.

In fact, we're considering more of this El Camino, starting in March at \$1,000 dollars each. The orders are already coming in.

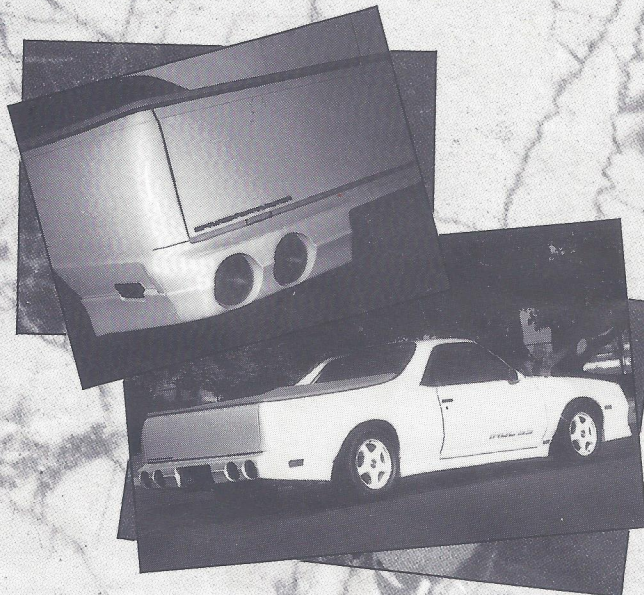
SST-11 NOSE

This new IROC Nose is hand laminated CORMAT lined fiberglass and comes with the G.M. factory IROC Camaro rubber front spoiler and factory IROC Camaro front turn signals that your El Camino turn signals plug in to.



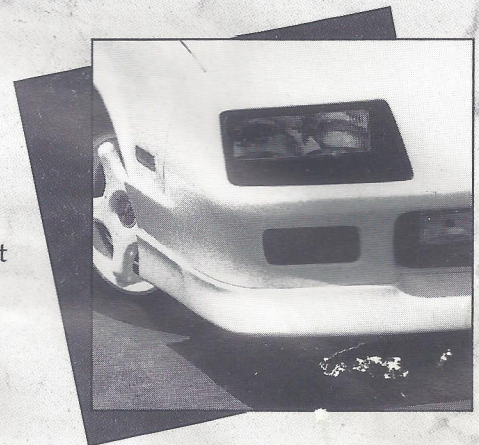
SST-14 REAR BUMPER

The Rear Bumper is hand laminated CORMAT lined fiberglass and comes with (4) 1989 Corvette taillite assemblies, (2) 1989 Corvette back-up lite assemblies and (2) Corvette pigtails.



SST-12 COMPOSITE ONE-PIECE HEADLITE ASSEMBLY

Optional Composite Headlite bolts directly into the SST-11 IROC nose and is a compact unit totally assembled with headlite, adjuster preassembled. Simply tighten three (3) bolts, plug in and adjust the beam.



How easy it is to install
come with only hand tools in
needed to complete the job.

and consider dollar value.
and then what can it be

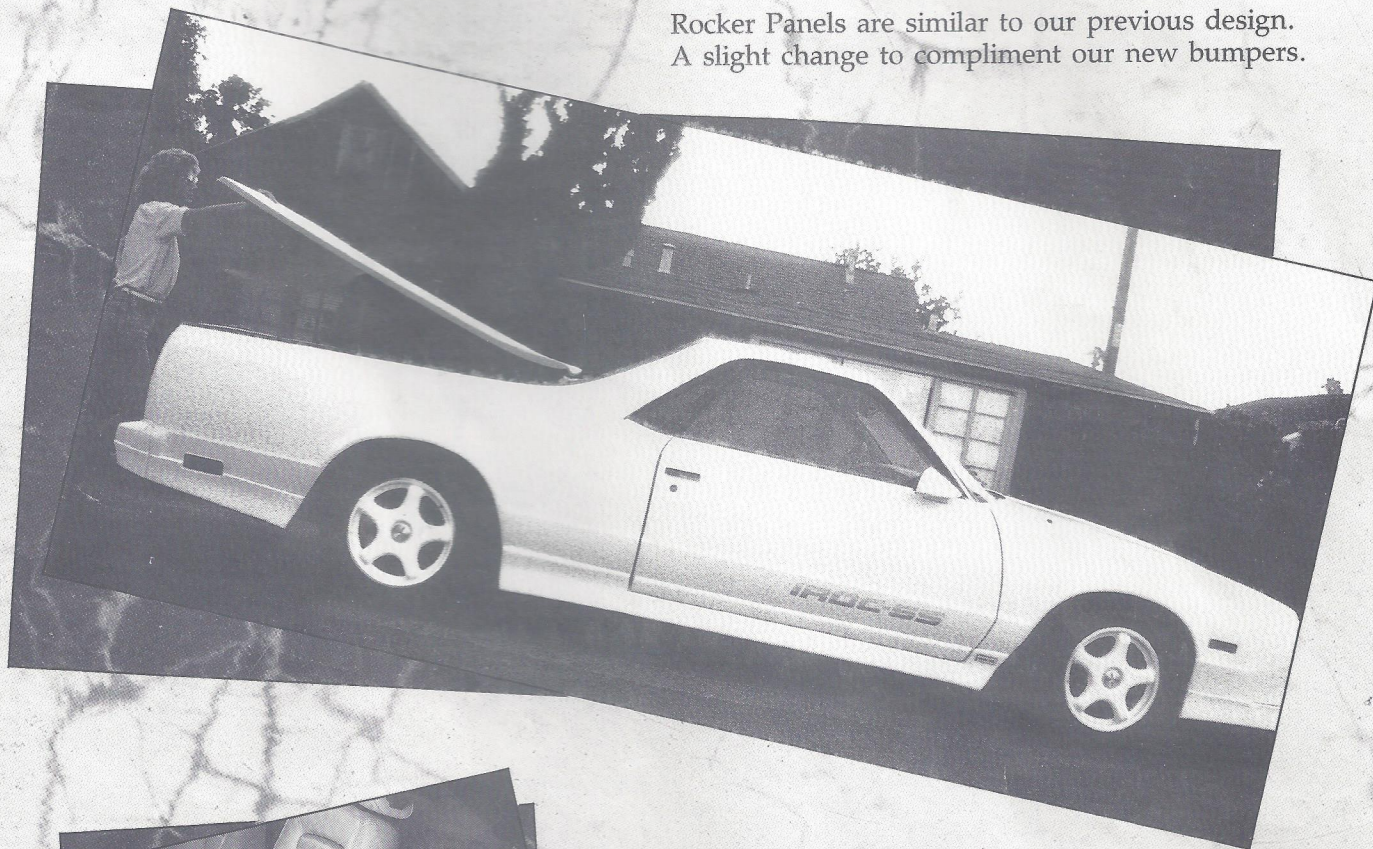
(featured project car) a 1989
IROC Camaro Interior,
wheels, tires and our new body

te this project and keep the total
e did it! A great value in today's

aking twelve turn key copies of
1990 for thirty eight thousand
y in if we decide to do it.

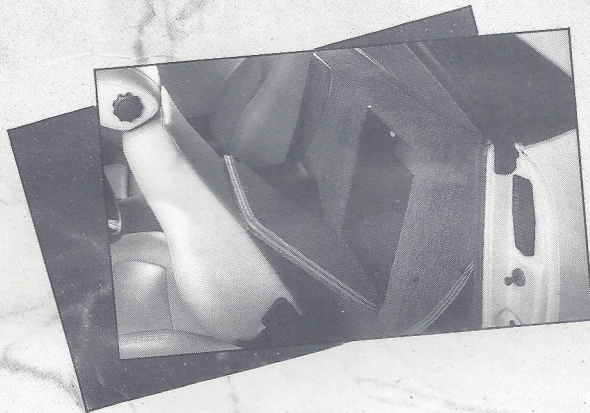
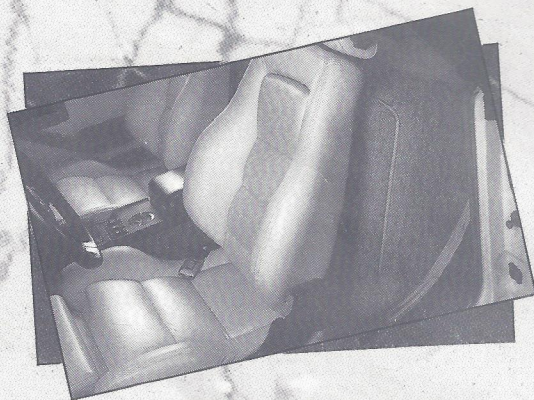
SST-1 ROCKER PANELS

Rocker Panels are similar to our previous design. A slight change to compliment our new bumpers.



SST-1200 FLOW FIT BUCKET SEATS

These seats are available in any color - leather, vinyl or cloth. Includes brackets and all necessary hardware for installation.

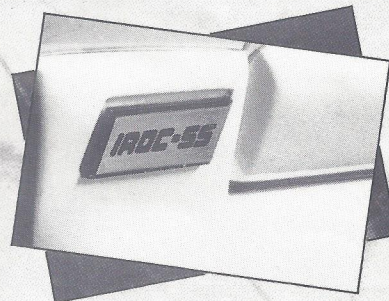


SST-15 REAR CARGO CONSOLE

The Rear Cargo Console bolts into existing holes. It has (2) doors for easy access to your hidden valuable items. Plus there is an abundance of rear stereo speaker space. The Rear Cargo Console fits all El Camino seats - buckets - 60/40 and the full bench.

SST-31 ALUMINUM IROC S/S ROCKER EMBLEMS

IROC S/S is machined 1/4" deep and anodized red.





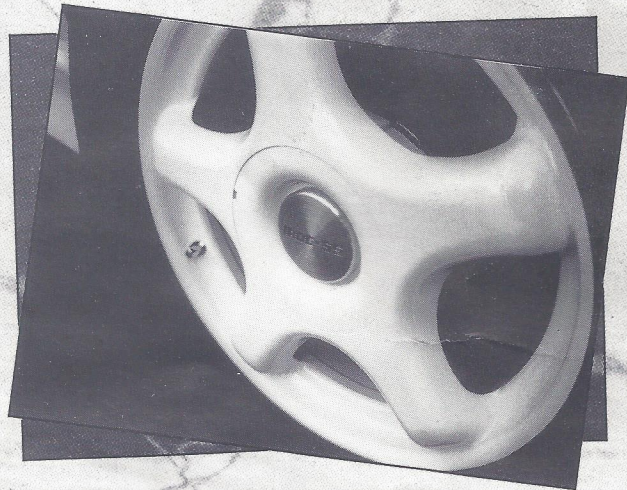
SST-16 CAMARO IROC DASH AND CONSOLE

The Camaro Dash and Console will replace your El Camino dash and the Camaro gage cluster will plug into your El Camino wiring with our new adaptor.

Comes completely ready to install and plug in. Includes a Camaro tach, fuel gage, amp, oil pressure, temp gage and our new 230 M.P.H. Speedometer.

SST-1400 16" x 8" WHEELS

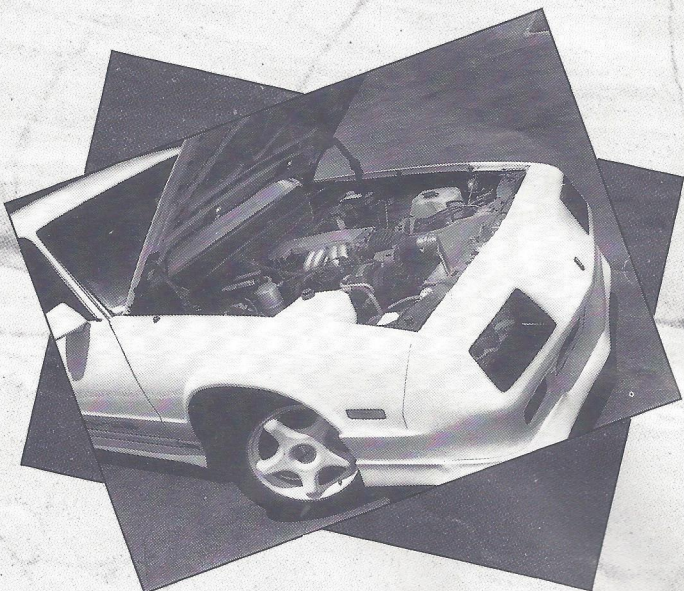
The DP wheels come with special wheel disc locks for your El Camino to bolt directly on.



350 or 305 Tuned-Port-Engine

Let us show you an easy, inexpensive way to use these engines **without** modifying the computer. A direct bolt in and start up!

You can get any of the new SST products individually or you can take advantage of the three (3) different packages we made available.



SST-10 BUILDERS PACKAGE

Includes: SST-11 Nose and Rubber Spoiler and Nose Crest.

SST-1 Rocker Set and Hardware with Plastic Emblems

SST-14 Rear Bumper and Rear Wrap Around Panels

The builders kit comes with all the body panels only.

SST-20 BUILDERS PACKAGE PLUS

The builders kit plus comes with all the body panels included in the SST-10 package plus two (2) front turn signal assemblies, four (4) rear Corvette taillite assemblies, two (2) Corvette back-up lites assemblies and two (2) pigtails.

SST-30 COMPLETE PACKAGE

This is our top line package that includes the following:

SST-11 Nose Panel
Nose Crest
IROC Camaro Rubber Spoiler

SST-1 Rocker Panels
Aluminum IROC S/S Rocker Emblems

SST-12 Optional Headlite Assembly
Headlite Wiring Pigtails

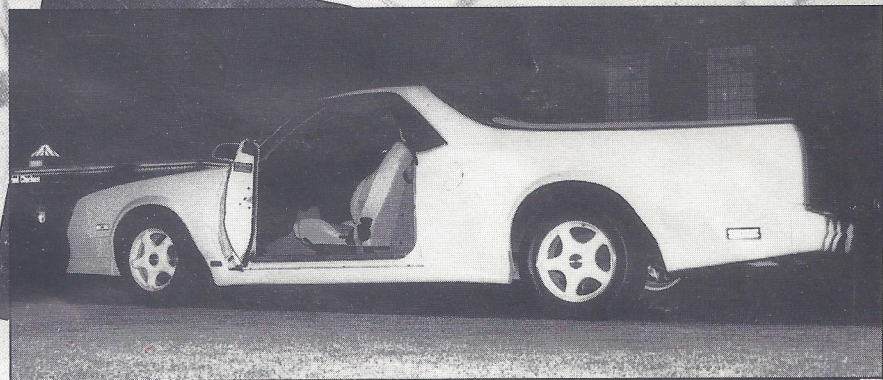
SST-14 Rear Bumper
(4) Corvette Taillite Assemblies
(2) Corvette Pigtails
(2) Corvette Back-up Lite Assemblies
3rd Brake Lite Assembly
(2) GTA Hood Vents and Screens
(2) IROC S/S Body Decals
(1) IROC S/S Rear Tail Gate Decal

These parts are made to order and are shipped via truck line.

Feel free to call us any time and we will be more than happy to answer any questions you may have.

Thank you for your interest,
Crystalite Engineering, Inc.

John D. Ference, President



Crystalite

ENGINEERING INC.

17855 SKY PARK CIRCLE, SUITE 17-C, IRVINE, CA 92714

(714) 250-4762 (714) 250-IROC

ROCK SOLID

